



2024 IMPACT REPORT

Empowering and Efficient.

Through workplace giving campaigns, we make it simple and accessible for individuals to support the causes that matter most to them. By streamlining the giving process, we empower employees and workplaces to be active participants in strengthening communities and making a tangible difference.

By providing a trusted platform for workplace giving, we ensure that funds reach organizations doing important work to make our communities and state thrive.

Together with employers, employees, nonprofit partners, and advocates like you, we've demonstrated how workplace giving can thrive—even in uncertain times.

With your support, we'll keep making it easier for people to give back, strengthening the nonprofits at the heart of our communities, and driving change where it's needed most.

Thank you for standing with us on this journey. Together, we're shaping a future built on compassion and action.

What's Next?

As I reflect on the last five years, I am struck by both the immense challenges we've faced and the remarkable resilience of our nonprofit community. The world continues to navigate uncertain times, and nonprofits are often on the front lines, addressing critical needs while adapting to a rapidly changing landscape.



And Give Nebraska is here to support those front-line organizations.

Despite these challenges, this year has also been a testament to the power of collaboration, innovation, and hope. Together, we are building stronger partnerships and expanding programs that directly impact lives. We are reminded that even in the most difficult moments, positive change is possible.

This annual report is more than a summary of the past year; it's a story of unwavering commitment to our mission. None of this would be possible without the support of our donors, volunteers, staff, and community members who continue to give generously of their time, resources, and energy.

With your continued support, we will rise to meet new challenges and seize opportunities to create an even greater impact. Together, we will build a brighter future for all Nebraskans.

Thank you for being an essential part of our journey.

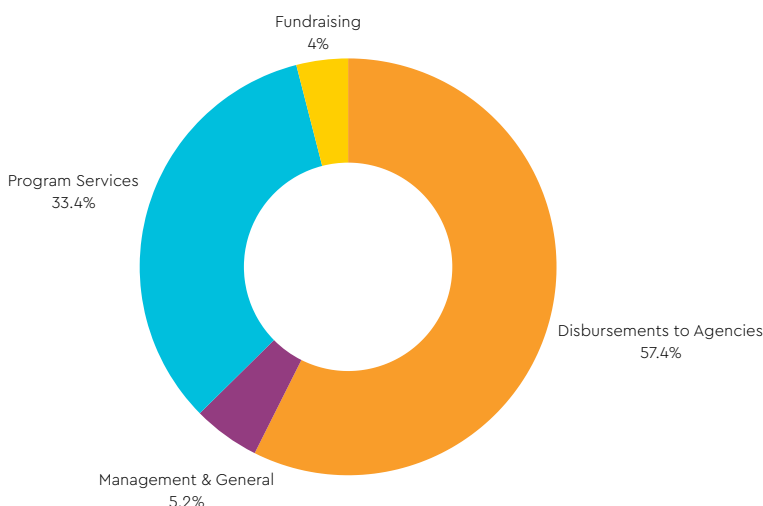
With gratitude and hope,

A handwritten signature in cursive script that reads "Melissa Filipi".

Melissa Filipi
Executive Director

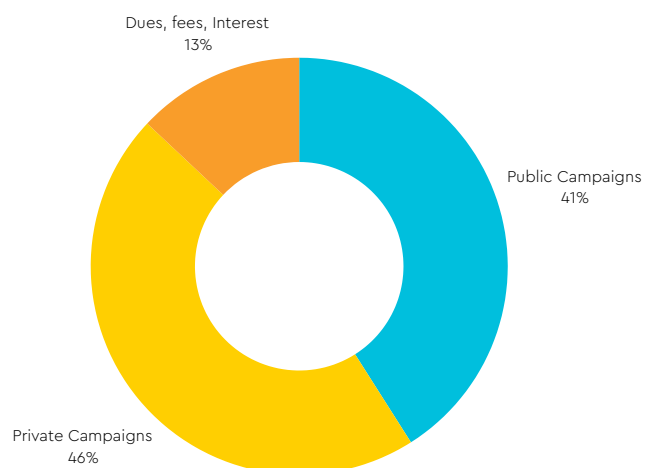
2023-24 Expenses

As of June 30, 2024



2023-24 Income

As of June 30, 2024





2023 Campaign Worksites

Buffalo County
City of Columbus
City of Kearney
City of Lincoln
City of Norfolk
Clark & Enersen
Cline Williams
Cooper Foundation, Inc.
Crete Carrier Corporation
EducationQuest Foundation
Federal Employees Combined
Campaign
Fremont Public Schools
INSPRO
Kawasaki
Lancaster County
Lincoln Chamber of Commerce
Lincoln Community Foundation
Lincoln Electric System
Lincoln Housing Authority
Lincoln Public Schools
Loup Power District
Lower Platte South Natural
Resources District
Nebraska Bank of Commerce
Norris School District
Northeast Community College
NRC Health
NRECA-Lincoln
Pinnacle Bank
Southeast Community College
University of Nebraska at Kearney
University of Nebraska at Omaha
University of Nebraska - Lincoln
University of Nebraska Medical Center
Wayne State College
West Pharmaceutical Services, Inc.
Woods Charitable Fund
Zelle HR Solutions

**2023 Campaign pledge payments
received in 2024*

Our success is built on the strength of partnerships. Nonprofit organizations are the lifeblood of our mission. These partners inspire us daily with their innovation, compassion, and unwavering dedication to improving lives.

Equally important are the partners who make workplace giving possible. Employers who champion these campaigns not only foster a culture of giving but also empower their teams to make meaningful contributions to causes close to their hearts. These businesses can and are leading the way in building stronger, more engaged communities.

By creating a bridge between workplaces and nonprofits, we promote generosity and build networks of support that extend far beyond any single campaign. It is this collective effort that allows us to thrive and ensures our mission continues to create lasting impact.

Your efforts inspire us to continue working tirelessly to make workplace giving a cornerstone of community support.

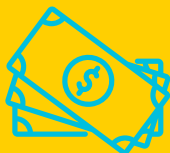
Top 5 Public Sector Campaigns

1. University of Nebraska - Lincoln
2. Lincoln Public Schools
3. City of Lincoln
4. Lincoln Electric System
5. Lancaster County



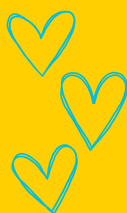
Top 5 Private Sector Campaigns

1. Crete Carrier Corporation
2. Pinnacle Bank
3. Kawasaki
4. University of Nebraska Medical Center
5. NRECA-Lincoln



Top 5 Agency Designations

1. Capital Humane Society
2. Planned Parenthood
3. Foundation for Lincoln Public Schools
4. Autism Center of Nebraska
5. Make-A-Wish Nebraska



How your dollars are making a difference...

\$50

helps prepare an animal for adoption
at Capital Humane Society

covers training manuals for two
volunteers at Nebraska
CASA Association



2023 Campaign Member Agencies

ACLU of Nebraska
Angels Among Us
The Arc of Nebraska
Audubon Nebraska
Autism Center of Nebraska (ACN)
Autism Society of Nebraska
The Bridge Behavioral Health
Bridges to Hope
Bright Lights
Capital Humane Society
Center for Rural Affairs
CenterPointe
Civic Nebraska
Clinic with a Heart
The Collective for Hope
Community Justice Center
Crane River Theater
Crane Trust
Disability Rights Nebraska
Down Syndrome Association for Families
Food Bank for the Heartland
Foundation for Lincoln City Libraries
Foundation for Lincoln Public Schools
Habitat for Humanity of Lincoln
History Nebraska Foundation
Houses of Hope of Nebraska, Inc.
Humanities Nebraska
JCMF / Josh The Otter & Float 4 Life
Junior League of Lincoln
Kearney Area Children's Museum
Leadership Lincoln, Inc.
Lincoln Arts Council
Lincoln Children's Museum
Lincoln Children's Zoo
Lincoln Community Playhouse
Lincoln Parks Foundation
Lincoln's Symphony Orchestra
Make-A-Wish Nebraska
The Mediation Center
Mental Health Association of Nebraska (MHA)
MENTOR Nebraska
Merryman Performing Arts Center
MilkWorks
Mothers Against Drunk Driving (MADD) Nebraska
Museum of Nebraska Art
NALHD - Nebraska Association of Local Health Directors
The Nature Conservancy
NCHS (Nebraska Children's Home Society)
Nebraska 4-H Foundation
Nebraska Alliance of Child Advocacy Centers
Nebraska Appleseed
Nebraska Association for the Education of Young Children, Inc.
Nebraska CASA Association
Nebraska Children and Families Foundation
Nebraska Coalition to End Sexual and Domestic Violence
Nebraska Community Foundation
Nebraska Public Media Foundation
Nebraska Recycling Council
Nebraska Statewide Arboretum
Nebraska Trails Foundation
Nonprofit Association of the Midlands
Omaha Girls Rock
Omaha Public Library Foundation
Omaha Zoo Foundation
Open Door Mission
OutNebraska
Partnership for a Healthy Lincoln
Planned Parenthood North Central States
Rabble Mill
RISE
Ronald McDonald House Charities in Omaha
Scouting America, Cornhusker Council
Seniors Foundation
ServeNebraska
Sunrise Communications, Inc. - KZUM
Wachiska Audubon Society

**2023 Campaign pledge payments received in 2024*

A Message from the Board Chair

As we begin 2025, we reflect with gratitude on the incredible work accomplished in the past year and look forward to the new opportunities ahead. This annual report highlights the powerful impact of your support across our member agencies—each working to create meaningful change in the communities we serve.

This new year, we are inspired by the strong foundation of Give Nebraska and are excited to build upon it, deepening our commitment to supporting leading nonprofits across the state. Your partnership is essential to this effort.

Thank you for your continuing support. Here's to a year of continued growth, impact, and hope.

Josh Hanshaw
Board Chair



Connect with Us

<https://www.facebook.com/GiveNebraskaOrg>
https://www.youtube.com/channel/UCBzoXh9R5j_8iG72hS0lxZQ
<https://www.linkedin.com/company/3077666/>
<https://twitter.com/givenebraska>



402-475-7759

3800 VerMaas Place, Suite 200
Lincoln, NE 68502

www.GiveNebraska.org