



Community
Services Fund
of Nebraska

2016-17 Impact Report

3800 VerMaas Place, Suite 200
Lincoln, NE 68502
402.475.7759
www.communityservicesfund.org

Community Services Fund of Nebraska exists to connect donors with the causes they care about most. We are a federation of 64 member agencies, operating across the state to make our communities a better place for all who live, work, and visit Nebraska.

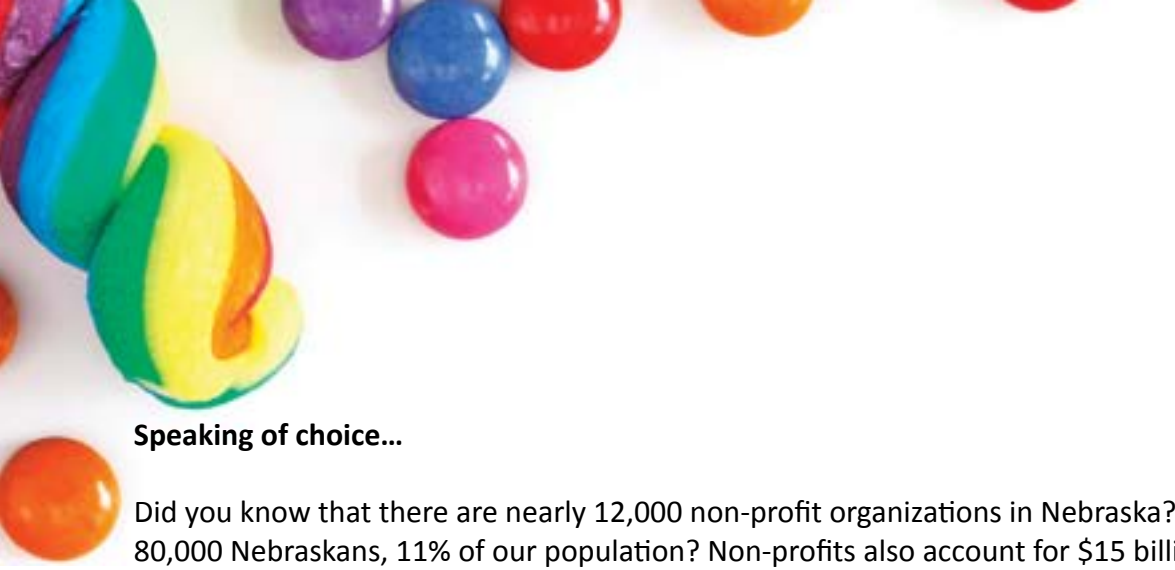
Your gift. Your choice.

We believe in empowering individuals to make independent decisions about their giving. We encourage donor designation for all donations to CSF. Whether you are passionate about arts, education, youth, animals, environment, or social justice, CSF has options for you!

Like a kid in a candy shop, you've got choices!

- \$10 vaccinates 3 dogs (Capital Humane Society)
- \$30 provides 5 days worth of meals to someone who is unable to afford their meals (Tabitha)
- \$50 allows an underserved family to attend a Family Concert (Lincoln's Symphony Orchestra)
- \$120 plants two community trees (Nebraska Statewide Arboretum)





Melissa Filipi
Executive Director

Speaking of choice...

Did you know that there are nearly 12,000 non-profit organizations in Nebraska? Or that they employ almost 80,000 Nebraskans, 11% of our population? Non-profits also account for \$15 billion in annual revenues.

Non-profits touch the lives of each and every one of us in a variety of ways. They help create a vibrant community. They make our community better and stronger.

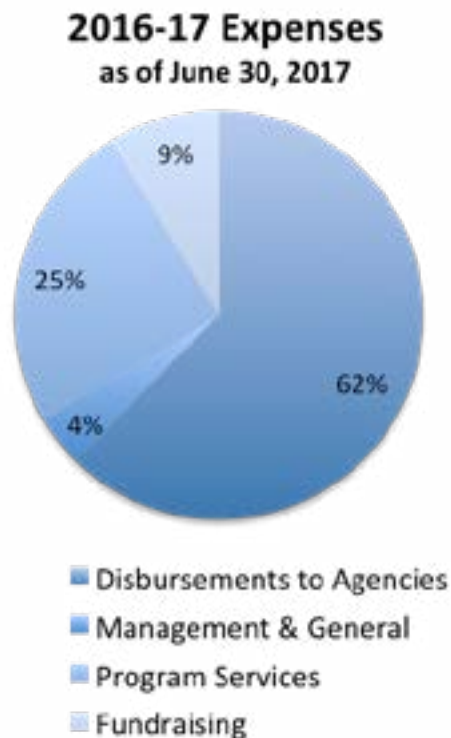
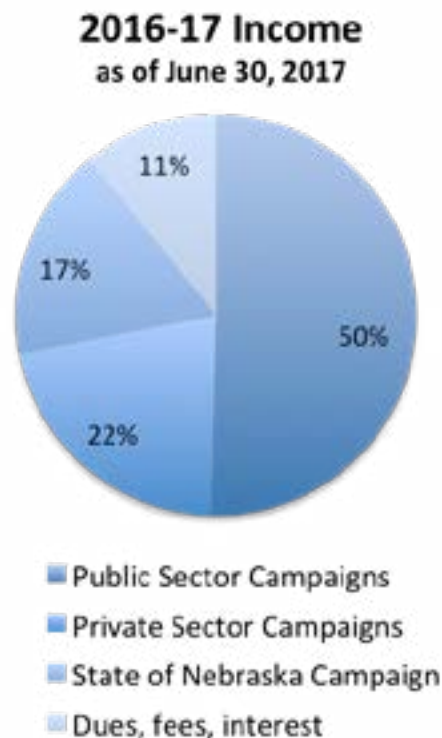
Did you know that Nebraska has been named the 6th best state for education, the 5th happiest state, and the 4th best state for business? Those are pretty high honors. And non-profit organizations are part of our success. They have an incredible impact in our state, and in the lives of each and every one of us.

Supporting our non-profits supports your friends, your co-workers, your neighbors, and your community.

Whether we realize it or not, we are all touched by the work of non-profits at many points in our lives. And they rely on our support to achieve their missions, help children and adults, animals and the environment, promote equality and the arts. The work of our non-profit member agencies is as diverse as our world today.

<https://www.youtube.com/watch?v=J9yUKxeEHeA&t=10s>

Community Services Fund works with donors, worksites, and non-profit member agencies to raise the funds necessary to improve the quality of life in our community. We strive to minimize our expenses while increasing the impact our members have on our community.



Since 2007, our membership has grown from 24 non-profit agencies to 64, a whopping 266% increase in our membership!

During that time, Community Services Fund of Nebraska has raised almost \$5 million in support of non-profits in our communities across the state. That's impressive considering we started with four member agencies in 1981 and raised about \$12,000.

THANK YOU to all of our donors, worksites (and their great coordinators!), member agencies, and volunteers. **YOU ARE MAKING A DIFFERENCE!**



Top 5 Public Sector Campaigns:

1. University of Nebraska – Lincoln
2. State of Nebraska
3. City of Lincoln
4. Lincoln Public Schools
5. Lincoln Electric System

Top 5 Private Sector Campaigns:

1. Crete Carrier Corporation
2. Pinnacle Bank
3. NRECA-Lincoln
4. National Research Corporation
5. Clark Enersen Partners

Top 5 Agency Designations:

1. Capital Humane Society
2. Planned Parenthood of the Heartland
3. Hearts United for Animals
4. Make-A-Wish Nebraska
5. Clinic with a Heart

“Giving through Community Services Fund of Nebraska makes it easy for me to give to the multiple causes I love.”

-Morrie,
CSF Donor

2016 Campaign Worksites

- City of Lincoln
- Clark Enersen Partners
- Cline Williams
- Cooper Foundation, Inc.
- Crete Carrier Corporation
- EducationQuest
- Ervin & Smith
- Inspro Insurance
- Kawasaki
- Knudsen Law Firm
- Lancaster County
- Lincoln Benefit Life
- Lincoln Chamber of Commerce
- Lincoln Community Foundation
- Lincoln Electric System
- Lincoln Housing Authority
- Lincoln Public Schools
- Lower Platte South Natural Resources District
- National Research Corporation
- Nebraska Bank of Commerce
- Nebraska State Education Association
- Nebraska Trucking Association
- Norris School District
- NRECA-Lincoln
- Pinnacle Bank
- Rembolt Ludtke LLP
- Southeast Community College
- State of Nebraska
- Swanson Russell
- Telesis, Inc.
- Union College
- University of Nebraska at Kearney
- University of Nebraska at Omaha
- University of Nebraska Foundation
- University of Nebraska – Lincoln
- University of Nebraska Medical Center
- Wayne State College



A Message from the Board Chair

This year has been an exciting time for Community Services Fund of Nebraska. CSF is pleased to continue to connect donors to the causes they care about. Through the generous support of our donors, our member agencies are working to improve the lives of all Nebraskans. Empowering donors to choose from diverse organizations and missions helps to create stronger communities.

In 2017, CSF welcomed our new Executive Director, Melissa Filipi. With a 17 year background in nonprofit development and marketing, Melissa is a great fit for Community Services Fund to continue building sustainable support for member agencies.

I hope you enjoy our 2016-17 Annual Report. I look forward to continued growth of member agencies and employer partners in 2018.

Anne Hindery
Board Chair
CEO, Nonprofit Association of the Midlands



2016 Campaign Member Agencies

ACLU of Nebraska
The Arc of Nebraska
Audubon Nebraska
Autism Center of Nebraska, Inc. (ACN)
The Bridge Behavioral Health
Buford Foundation (Camp Confidence)
Capital Humane Society
Center for Rural Affairs
CenterPointe
Clinic with a Heart
Foundation for Lincoln City Libraries
Girl Scouts Homestead Service Area
The Groundwater Foundation
Habitat for Humanity of Lincoln
Hear Nebraska
Hearts United for Animals
Houses of Hope of Nebraska, Inc.
Humanities Nebraska
Inclusive Communities
Junior League of Lincoln
Justice For Our Neighbors-NE
KZUM Radio (Sunrise Communications)

Leadership Lincoln, Inc.
Lincoln Arts Council
Lincoln Children's Museum
Lincoln Children's Zoo
Lincoln Community Playhouse
Lincoln Parks Foundation
Make-A-Wish Nebraska
The Mediation Center
Mental Health Association of Nebraska
Midlands Mentoring Partnership
MilkWorks
Mothers Against Drunk Driving (MADD)
Museum of Nebraska Art (MONA)
The Nature Conservancy in Nebraska
Nebraska Alliance of Child Advocacy Centers
Nebraska Appleseed
Nebraska Association for the Education of Young Children
NALHD - Nebraska Association of Local Health Directors
Nebraska CASA Association

Nebraska Children and Families Foundation
Nebraska Children's Home Society
Nebraska Coalition to End Sexual and Domestic Violence
Nebraska Sports Council
Nebraska Statewide Arboretum
Nebraska Trails Foundation
Nebraskans for Civic Reform
NET Foundation for Radio
NET Foundation for Television
Nonprofit Association of the Midlands
Open Door Mission
Outlinc, Inc.
Partnership for a Healthy Lincoln
People's Health Center
Planned Parenthood of the Heartland
Seniors Foundation of Lincoln & Lancaster County
ServeNebraska
Tabitha
University of Nebraska Foundation
Voices for Children in Nebraska
Volunteers of America-Western Nebraska

